

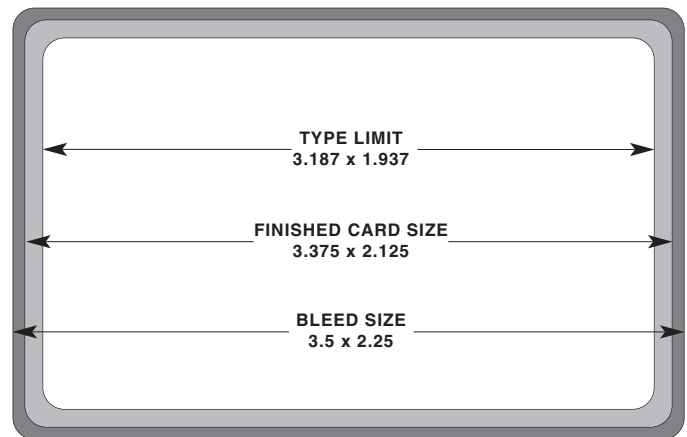
## DIGITAL ART SPECIFICATIONS GENERAL INFORMATION

- When sending artwork files please include all embedded and placed files. Also include all fonts that pertain to that design, including screen fonts and printer fonts. All elements should be editable.
- Digital data can be received in the following formats: CD and DVD. We highly recommend Macintosh based files for better processing.
- We accept files in QuarkXpress, Photoshop, Illustrator, InDesign and Freehand. We cannot accept files that were created in programs such as Word, Powerpoint, etc.
- Files can also be sent through e-mail. These files should be compressed using Stuffit Deluxe Software or equivalent. E-mail files to [preflight@vct.com](mailto:preflight@vct.com) and notify your Sales representative.
- **For FTP upload please contact us to set-up an account access.**
- For Spot Color elements, line art, and text please use Vector Based Programs like Illustrator or FreeHand. (Corel Draw is not recommended).
- Resolution of Photos should be no less than 350ppi when used at 100% or less. **NOTE:** The resolution for photos that are enlarged from other applications, should be higher. RGB Images must be converted to CMYK for offset printing.
- Due to the complexity of printing on plastic, we prefer to handle trapping in house.
- If there is to be a magnetic stripe and/or signature panel on the back of the card, please keep all type and illustrations at least 1/16" of an inch away from each other to allow normal movement during the manufacturing process.
- Because of the uniqueness of printing on plastic, gradations should not be 0% to 100%. If gradations are created at about 6% to 99% they have a less tendency of banding effect.
- Fonts that are reversed out should not be no less than 6 pt. and not of the serif kind, also it is recommended that they not be reversed out within multiple colors. This will help avoid the type from filling in and misregistration on the press.
- Specify colors to be used for production. (Ex. CMYK, spot, metallics, or any other special applications).
- Please include with your digital art, separated laser printouts and/or color proofs which will enable us to interpret your expectations.

### CR80 DIMENSIONS

#### FRONT/ BACK

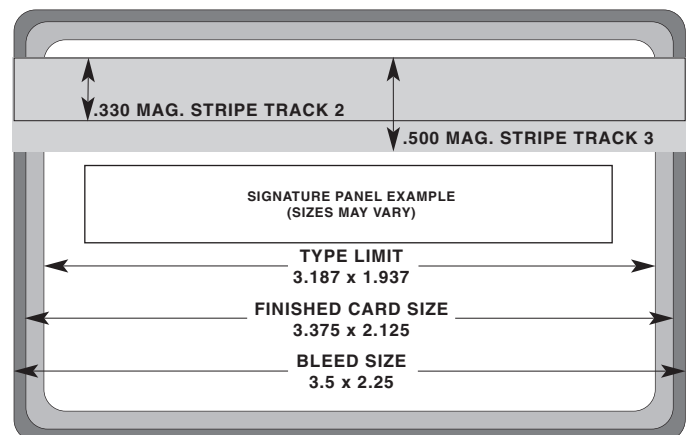
corner radius .125



Measurements are in INCHES

#### BACK w/ Magnetic Stripe

corner radius .125



Measurements are in INCHES